

## Extreme Warp Makeover

### Workshop Instructions and Supply List

The workshop *Extreme Warp Makeover* is an on-loom workshop that is a combination of weaving and presentation/discussion. During this workshop, we will explore the versatility of a single threading by “making over” the threading you choose from one of the three provided in a multitude of ways by changing the treadling sequences and wefts. At the same time, we will be covering the fundamentals of many common and uncommon weave structures. Even though the threadings you can choose from only require four shafts, we can discuss how the variations may be applied to threadings that require more than four shafts if you wish. You will warp your floor or table loom prior to the workshop and weave only on your own loom during the workshop.

I encourage workshop participants to use materials they already have on hand. The warping instructions for this workshop specify 5/2 or 8/2 cotton; however, if you would like to substitute a yarn you already have, please contact me so we can adjust the sample set-up accordingly.

#### Supply list

- Pre-warped loom, with a minimum of four shafts, set-up per the warping instructions on the following page. Please feel free to warp your loom wider and/or longer than the minimum specified.
- At least three shuttles. Stick shuttles are fine. Extra bobbins for boat shuttles are encouraged.
- Wefts required for the different treadlings
  - Same yarn in color and size as the warp
  - Two wefts the same size as the warp in contrasting colors
  - Two wefts slightly larger in diameter than the warp (e.g., 3/2 cotton weft for a 5/2 cotton warp; 5/2 cotton weft for an 8/2 cotton warp) in contrasting colors. For the purpose of the workshop, you can double ends of smaller wefts.
  - Any other yarns, especially novelty yarns, in your stash you would like to experiment with
- Pen/pencil and paper to take notes
- A small pair of sharp scissors

I highly recommend that you mark the items you bring (e.g., shuttles, scissors, etc.) since it will help identify anything that may stray or get left behind.

Come prepared to learn and have fun. I’m looking forward to sharing with you my enthusiasm for the versatility of these four-shaft weave structures. If you have any questions about the workshop or about sample instructions, please feel free to contact me.

Robyn Spady  
[robyn@spadystudios.com](mailto:robyn@spadystudios.com)  
(360) 204-6188

**Warping:** Choose *one* of the three threadings below to warp your loom with. Please do not warp the threadings side-by-side. Floating selvages are optional.

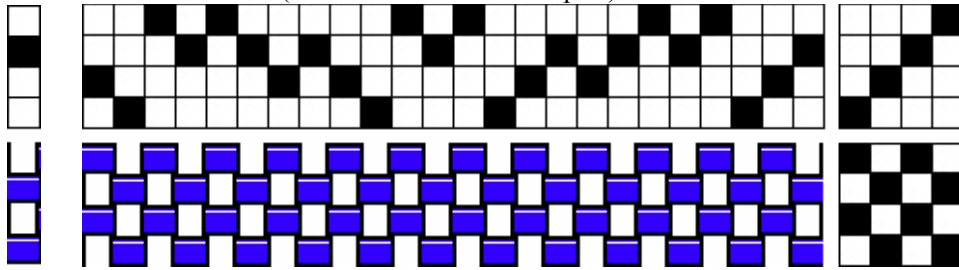
Warp - 5/2 cotton sett at 16 ends per inch (epi) or 8/2 cotton sett at 20 epi  
 Width - 8 inches (recommended minimum)  
 Length of warp (recommended minimum)

- Three yards for table looms
- Four yards for floor looms

Tie-up for floor looms – To avoid retying treadles during the workshop, use a direct tie-up (treadle one tied to shaft one, treadle two tied to shaft two, etc.). If you have six treadles, you may find tying two treadles for plain weave (1-3 and 2-4) convenient for weaving plain weave and tabby weft picks.

**Overshot Threading**

(Total of 24 ends in one repeat)

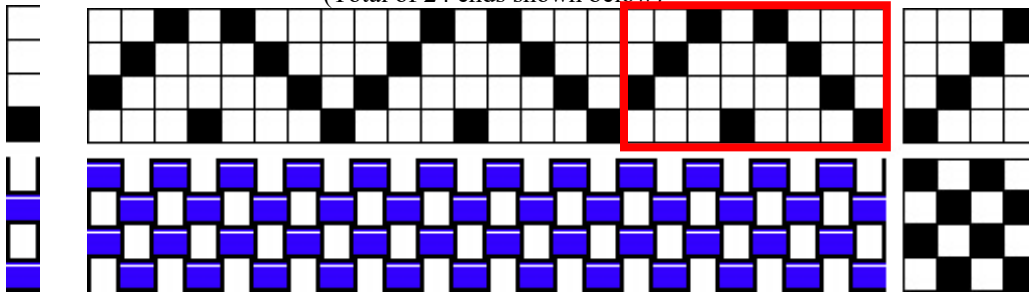


**Note:** Add one warp end on the left selvage threaded through a heddle on shaft three to complete the pattern image

**Rosepath Twill Threading**

(Total of 24 ends shown below)

One repeat = eight ends



**Note:** Add one warp end on the left selvage threaded through a heddle on shaft one to complete the pattern image

**Huck Lace Threading**

(Total of 20 ends shown below)

One repeat = ten ends

